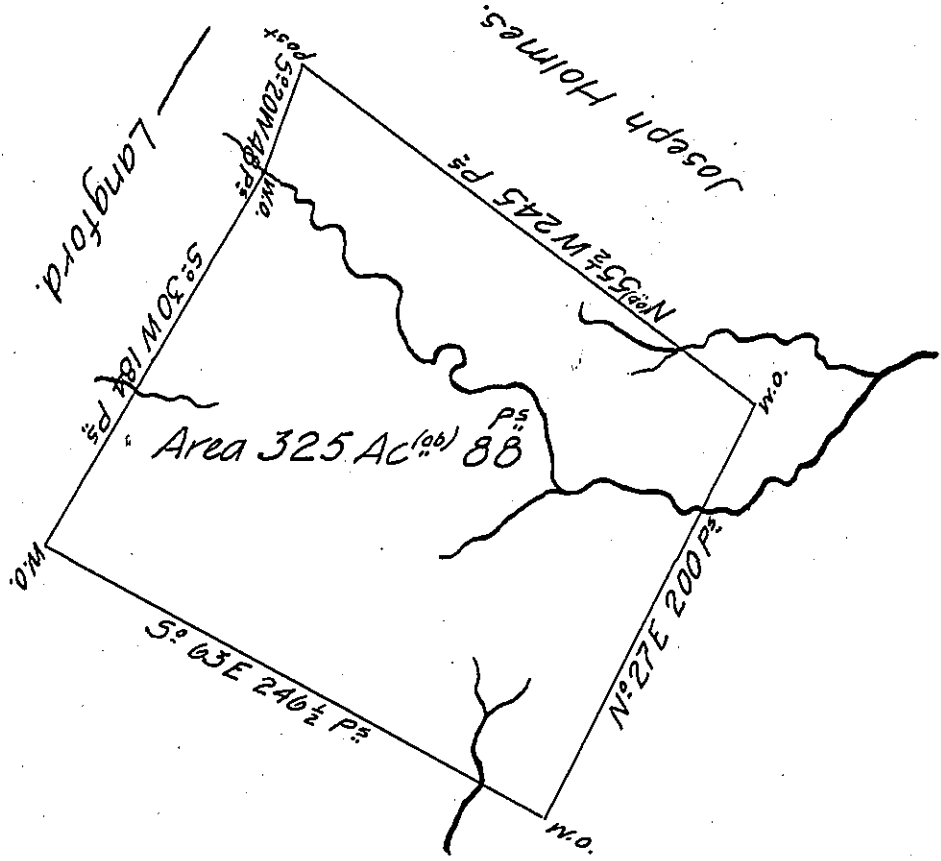


(Use 180)



A Draught of a Survey called "The Garden" situate on the waters of  
 Kings Cr. in Washington County cont<sup>g</sup> 307 Ac<sup>s</sup> 10 P<sup>s</sup> and y<sup>e</sup> usual Allow<sup>ce</sup>  
 for Roads &c executed Nov<sup>r</sup> y<sup>e</sup> 10<sup>th</sup> 1785 in Pursuance of a Warr<sup>t</sup> grant<sup>ed</sup>  
 to Jn<sup>o</sup> Marshall for 300 Ac<sup>s</sup> dated Sep<sup>r</sup> 21<sup>st</sup> 1785.

Presley Nevill }  
 Matt<sup>w</sup> Ritchie } D.S.

Jn<sup>o</sup> Lukens Esq<sup>r</sup> S.G.

IN TESTIMONY that the above is a copy of the original remaining on file in  
 the Department of Internal Affairs of Pennsylvania, made  
 conformably to an Act of Assembly approved the 16th day of  
 February, 1833, I have hereunto set my Hand and caused  
 the Seal of said Department to be affixed at Harrisburg,  
 this thirteenth day of December 1905.

*Joacn. P. Hoover*  
 Secretary of Internal Affairs.